

REF.:4664

Andorra | Sotheby's
INTERNATIONAL REALTY

Apartment for sale in Lisboa

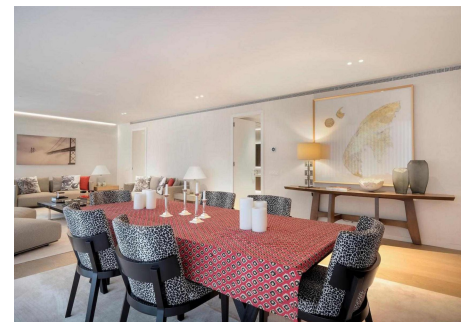
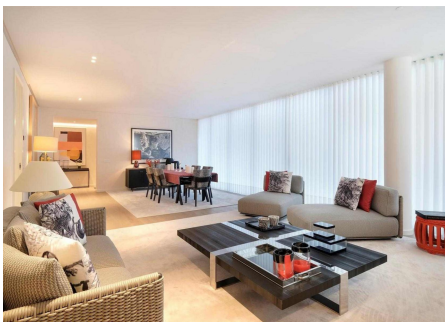
Portugal - Lisboa

Superficie	Habitaciones	Baños	Precio
174 m ²	3	2	1.030.000 €

Contáctenos para recibir más
información o solicitar una visita

 +376 872 222

 info@sir.ad



REF.:4664

Apartment for sale in Lisboa

Portugal - Lisboa

Superficie	Habitaciones	Baños	Precio
174 m ²	3	2	1.030.000 €

Contáctenos para recibir más información o solicitar una visita

+376 872 222

info@sir.ad

普拉塔河滨村是一个绝对独特的发展。这是一个与最新技术交织在一起的建筑项目，其材料具有可持续性和耐用性。在过去的基础上，但展望未来，该项目代表了里斯本所能提供的最好的服务，远远超出了变革的意义。随着不可能坦白说不同的元素，如与皮亚诺的现代建筑排列在外观合拍传统的陶瓷砖，普拉塔滨江新村上升与塔霍河特权观点和舒适的方式实现的一个简单的背景下打开令人敬畏的背景。这些公寓的类型从T0到T5(从一室公寓到五卧室公寓)不等，均带有私人停车场。在开发项目的内部空间中，您将享受宽敞的花园，阳光明媚的露台和宽敞的阳台，所有的一切都将为您的庇护所。在外太空，您可以体验Naquesque公园郁郁葱葱的绿色自由，此外还有各种休闲区，商业区，露台，游乐场和毗邻河的自行车道。

Características

- ✓ Terrassa
- ✓ Parking
- ✓ Transport públic aprop
- ✓ Jardí
- ✓ Balcó
- ✓ Jardí
- ✓ Zona verda
- ✓ Calefacció
- ✓ Ascensor
- ✓ Porta de seguret

REF.:4664

Andorra | Sotheby's
INTERNATIONAL REALTY

Apartment for sale in Lisboa

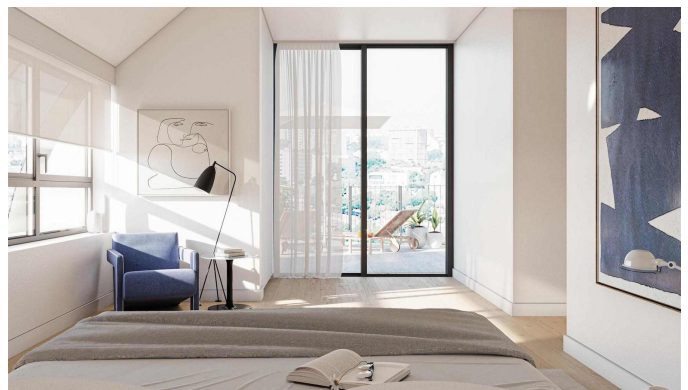
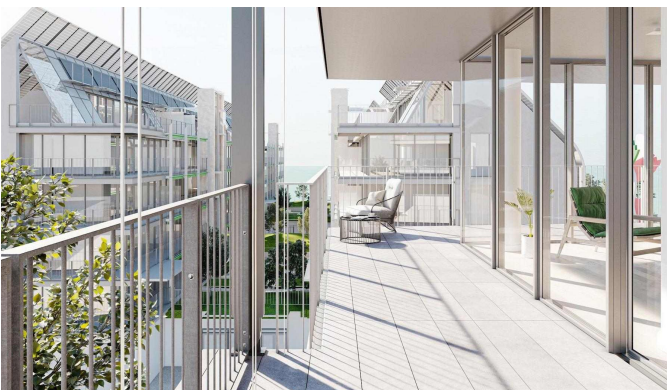
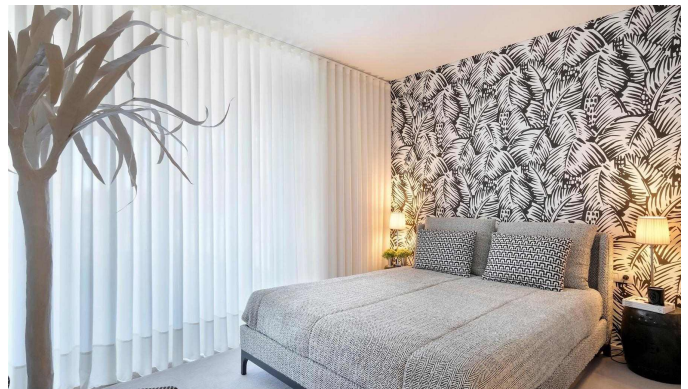
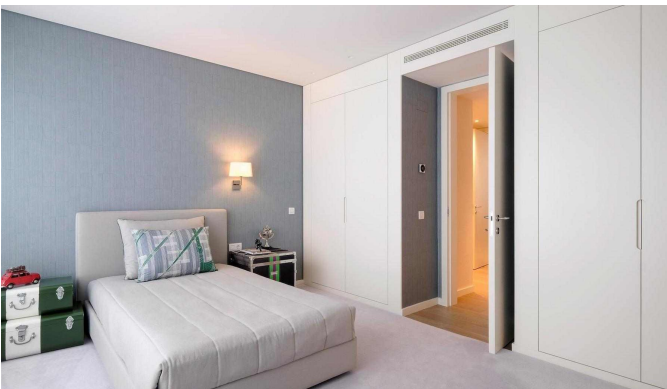
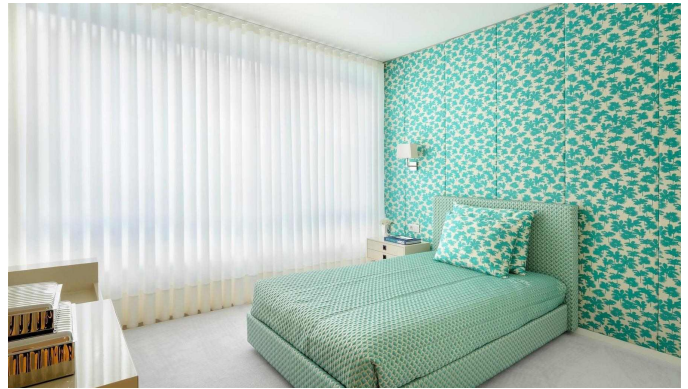
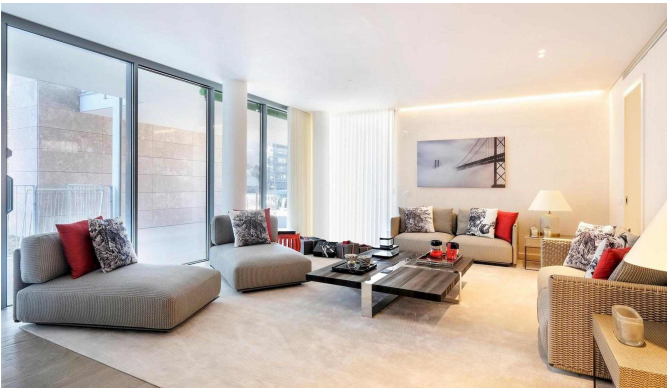
Portugal - Lisboa

Superficie	Habitaciones	Baños	Precio
174 m ²	3	2	1.030.000 €

Contáctenos para recibir más información o solicitar una visita

 +376 872 222

 info@sir.ad



Sotheby's International Realty® is a registered trademark licensed to Sotheby's International Realty Affiliates LLC. Each Sotheby's International Realty® office is independently owned and operated.

Andorra Sotheby's International Realty
Calle Santa Anna, 14 AD700 Escaldes-Engordany Principado de Andorra
Tel: +376 872 222 · Email: info@sir.ad

www.andorra-sothebysrealty.com