

REF.:5559

Andorra | Sotheby's
INTERNATIONAL REALTY

Large commercial building for rent in Santa Coloma

Andorra - Santa Coloma

Superficie	Habitaciones	Baños	Precio
4500 m²	0	0	Consultar €

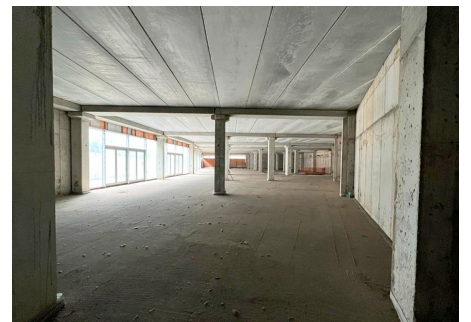
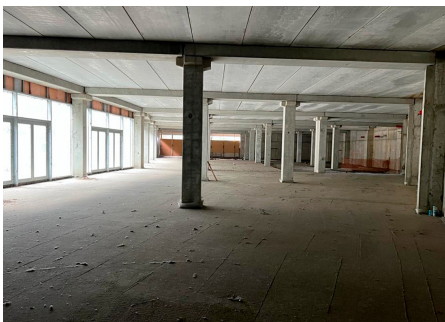
Contáctenos para recibir más información o solicitar una visita



+376 872 222



info@sir.ad



Large commercial building for rent in Santa Coloma

Andorra - Santa Coloma

Superficie	Habitaciones	Baños	Precio
4500 m²	0	0	Consultar €

Contáctenos para recibir más información o solicitar una visita

+376 872 222
info@sir.ad

Large commercial building for rent in the most central location of Santa Coloma, and with all services nearby. Located in a very busy area of Andorra and with very good access, with great commercial activity and numerous hotels, it is considered a strategic enclave in the country. This commercial building consists of 4,405 m2, distributed on the ground, first and second floors, and a plot of approximately 6,000 m2 that can be used for parking and a logistics area. In addition to the main entrance at the foot of the street, the area has approximately 175 parking areas designed for the reception of customers and access for transport trucks and suppliers. Thanks to the multitude of openings present in all the walls, there is a lot of natural light throughout the day. Being on an avenue with a lot of vehicle traffic, especially for business people due to the many embassies, the seat of the Government of Andorra and financial companies, the place has high expectations of customers. Suitable for any type of large-scale business. Entirely exterior, the place has a very visible and easy-to-find facade. An adaptable investment opportunity to install major brands in the country or any type of project.

Características

- ✓ Aparador
- ✓ Entrada camió
- ✓ Assolellat
- ✓ Transport públic aprop
- ✓ Zona càrrega descàrrega
- ✓ Centre de negocis
- ✓ Edificable
- ✓ Parking
- ✓ Vistes ciutat
- ✓ Magatzem
- ✓ Planta diàfana
- ✓ Visibilitat
- ✓ Vistes a la muntanya
- ✓ Zona verda

REF.:5559

Andorra | Sotheby's
INTERNATIONAL REALTY

Large commercial building for rent in Santa Coloma

Andorra - Santa Coloma

Superficie	Habitaciones	Baños	Precio
4500 m ²	0	0	Consultar €

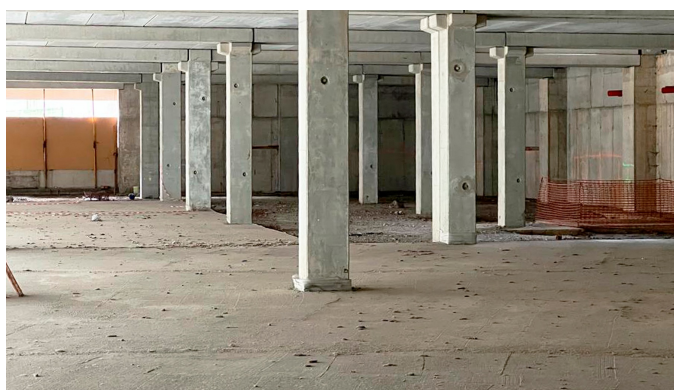
Contáctenos para recibir más información o solicitar una visita



+376 872 222



info@sir.ad



Sotheby's International Realty® is a registered trademark licensed to Sotheby's International Realty Affiliates LLC. Each Sotheby's International Realty® office is independently owned and operated.

Andorra Sotheby's International Realty
Calle Santa Anna, 14 AD700 Escaldes-Engordany Principado de Andorra
Tel: +376 872 222 · Email: info@sir.ad

www.andorra-sothebysrealty.com